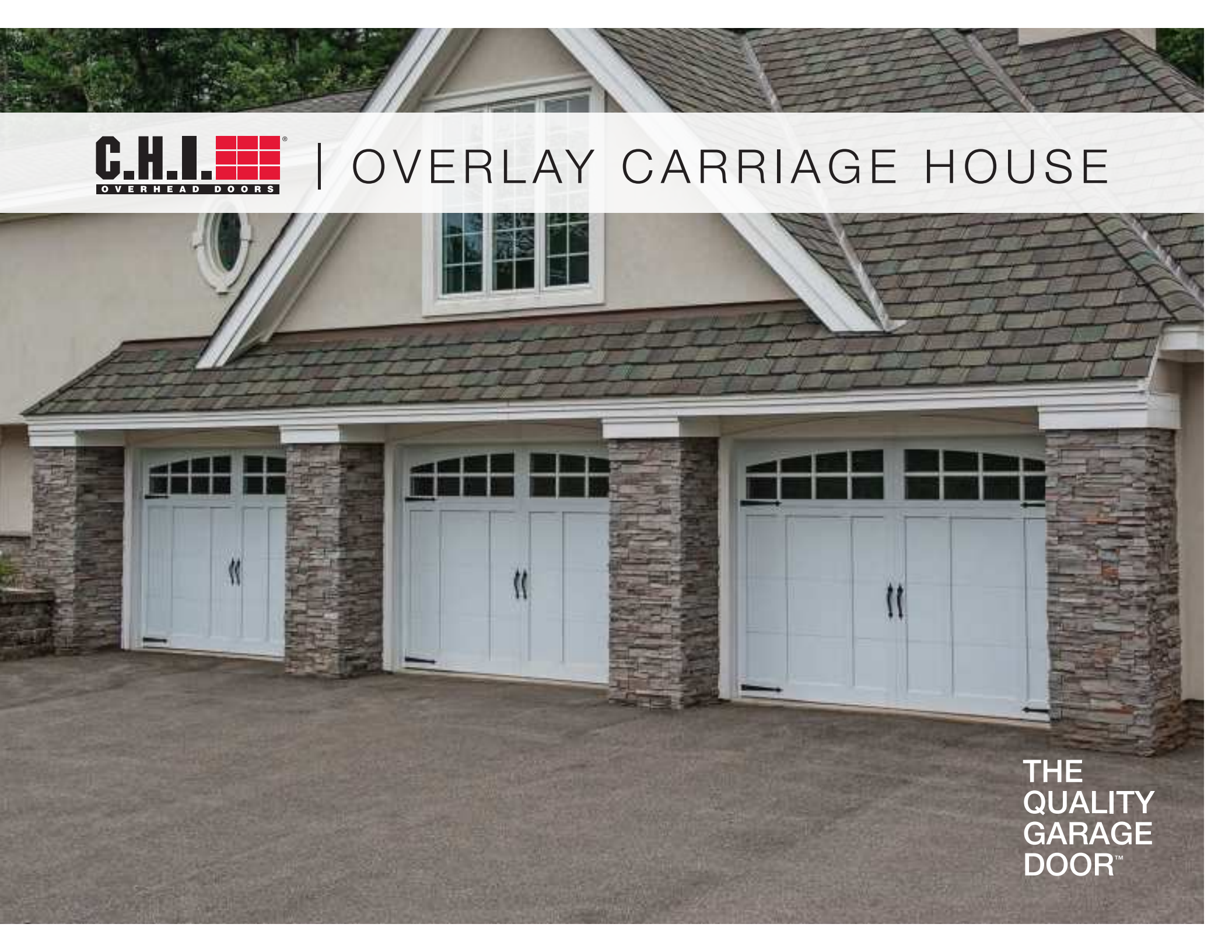




# OVERLAY CARRIAGE HOUSE



THE  
QUALITY  
GARAGE  
DOOR™

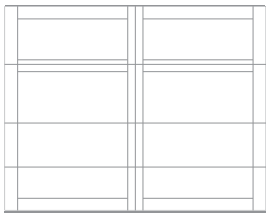


CLASSIC STYLE IN A BOLD WAY

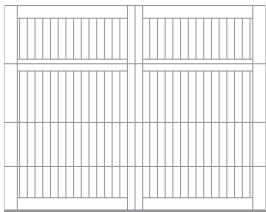
# OVERLAY CARRIAGE HOUSE

C.H.I.'s line of carriage style doors are carefully crafted, resulting in an exceptional collection of traditional doors. Whether you prefer the strength of steel, the durability of fiberglass or the beauty of rich, natural wood, you'll find the garage doors you want here with details you won't find anywhere else.

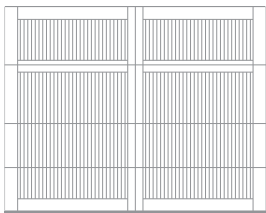
## GARAGE DOOR STYLES



Steel Overlay Carriage House



Wood Overlay Carriage House



Fiberglass Overlay Carriage House



**Steel Overlay Carriage House, Model 5334A** shown in white and spade hardware.



**Fiberglass Overlay Carriage House, Model 5830** shown in white with optional 4 piece stockton madison window designs and tinted glass.



Learn more at  
[chichd.com/overlay-carriage-house](http://chichd.com/overlay-carriage-house)

# OVERLAY CARRIAGE HOUSE PERSONALIZING OPTIONS\*

\*Not all options shown are available with every model.

## COLORS<sup>1</sup>



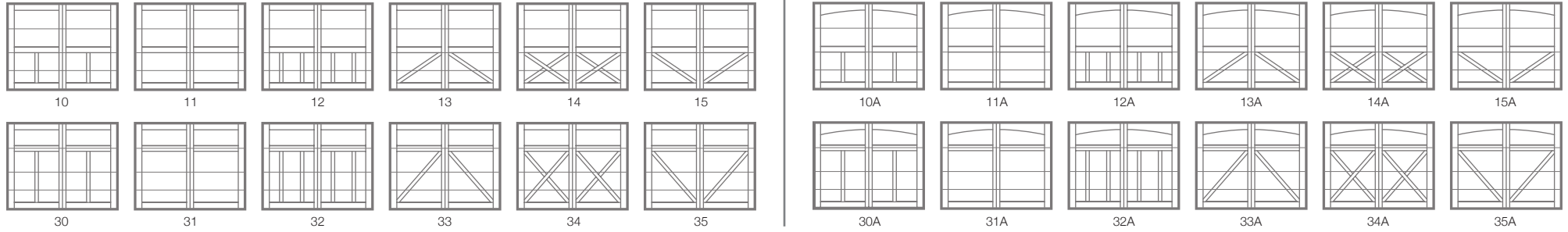
## 2-TONE<sup>2</sup>



## WOOD<sup>3</sup>



## OVERLAY CARRIAGE HOUSE DESIGNS



## WINDOW DESIGNS

### Overlay - Single Row



Stockton



2-2 Piece Arched Stockton



4 Piece Arched Stockton



Madison



2-2 Piece Arched Madison



4 Piece Arched Madison

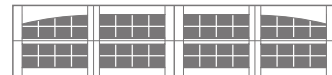
### Overlay - Double Row



Stockton



2-2 Piece Arched Stockton



4 Piece Arched Stockton



Madison



2-2 Piece Arched Madison

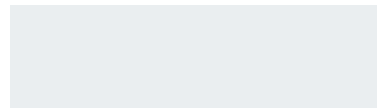


4 Piece Arched Madison

## GLASS



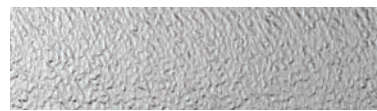
Plain available as polycarbonate



Frosted



Tinted



Obscure



Glue Chip



Seeded

## EXTERIOR HARDWARE

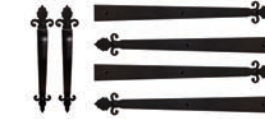
### Permanent



Spade standard



Wrought Iron



Barcelona 1



Barcelona 2

### Magnetic



Spade



Ashford



Clavos

# OVERLAY CARRIAGE HOUSE MODEL SELECTION CHART

## Select Your Garage Door Model

BETTER			BEST			
<b>Insulation Type</b>	1-13/16" Polystyrene 	1-13/16" Polystyrene 	1-7/8" Polyurethane 	1-7/8" Polyurethane 		
<b>R-value</b>	R-10.29	R-10.67	R-10.78	R-17.54	R-17.92	R-18.03
<b>Backing</b>	Steel			Steel		
<b>Construction Type</b>	Heavy Duty			Heavy Duty		
<b>Panel Style / Model Number</b>						
 Steel	<b>5300</b>			<b>5600</b>		
 Wood			<b>5400</b>			<b>5700</b>
 Fiberglass		<b>5500</b>		<b>5800</b>		

## Personalize Your Garage Door

Colors <sup>1</sup>						
White	•	•	•	•	•	•
Almond	•	•	•	•	•	•
Sandstone	•	•	•	•	•	•
2-Tone <sup>2</sup>						
White	Almond	•	•	•	•	•
White	Sandstone	•	•	•	•	•
Wood <sup>3</sup>						
Cedar	•	•	•	•	•	•
Mahogany	•	•	•	•	•	•

<sup>1</sup> Refer to your local C.H.I. Dealer for exact color match. <sup>2</sup> Wood grain textured polystyrene overlay boards are always white for a 2-tone design. <sup>3</sup> Wood types used are Western Red Cedar and Fijian Mahogany.



### Want Overlay Carriage House without the maintenance?

Check out Flush Overlay garage doors. They are completely flat, utilizing full color digital imaging to achieve the appearance of a real overlay carriage house garage door.

See Accents Woodtones brochure.



### Limited Lifetime Warranty

Part of owning a C.H.I. garage door is knowing that you can rely on the industry's best warranty. To maintain proper operation, an annual service inspection by a C.H.I. dealer is encouraged.

 SECTIONS <b>Limited Lifetime</b>	 OVERLAYS <b>1 &amp; 3 Years</b>	 SPRINGS <b>3 Years</b>	 HARDWARE <b>6 Years</b>
---	--	---	--

<sup>1</sup> 1 year for wood overlay models or 3 years for steel and fiberglass overlay models. Consult with your C.H.I. Dealer for specific warranty coverage as each model varies in coverage.



**Visit our website**  
For more information, photos, or videos visit our website,  
[chiohd.com/overlay-carriage-house](http://chiohd.com/overlay-carriage-house)

